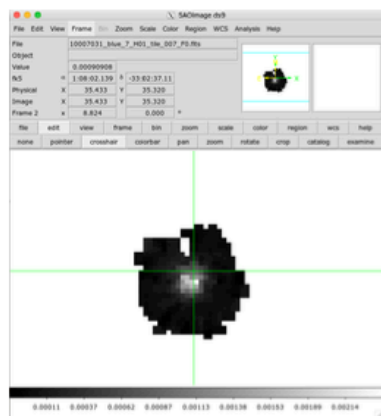
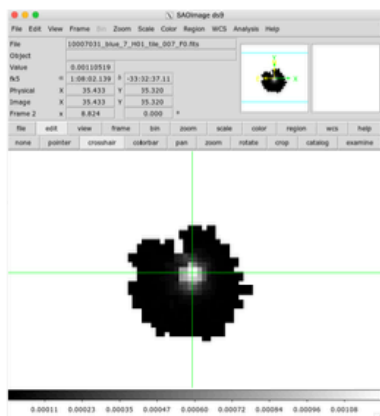


Hector Data Reduction Pipeline

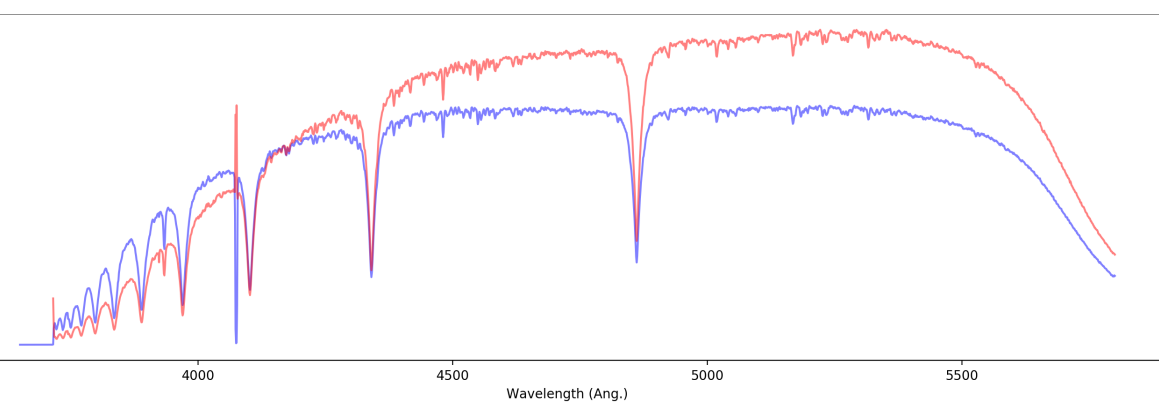
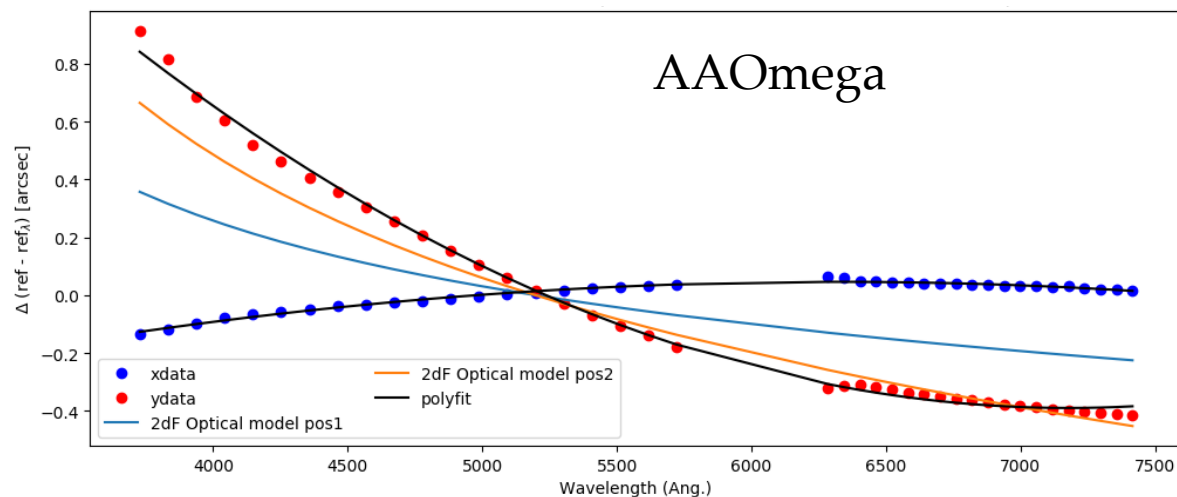
Addressing chromatic variations in distortion (CVD)



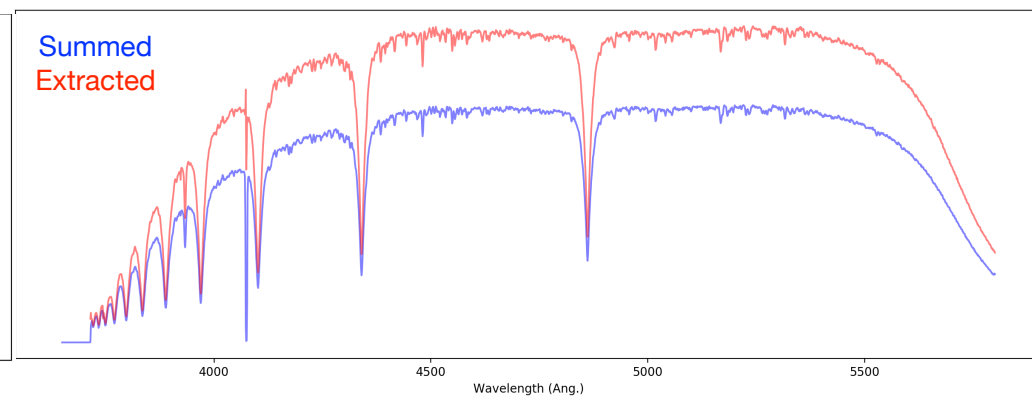
at 4000 A



at 5000 A



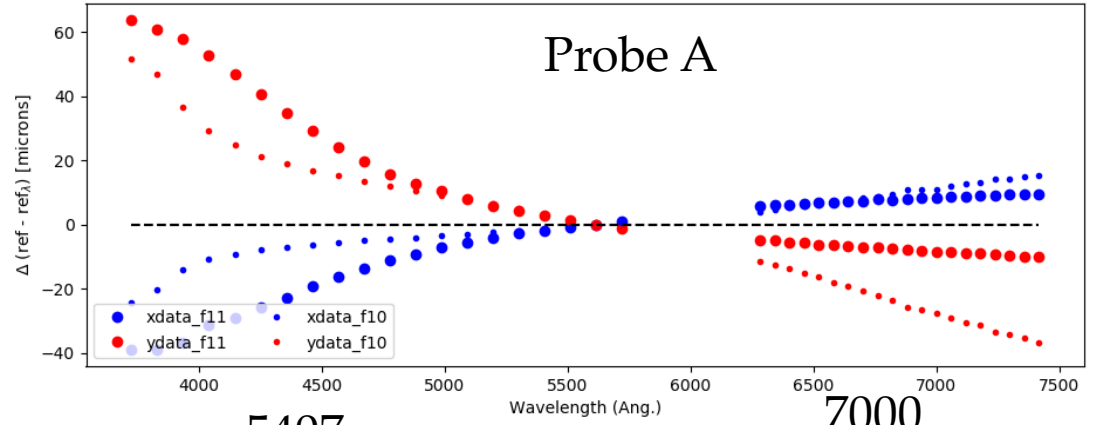
Before corrections



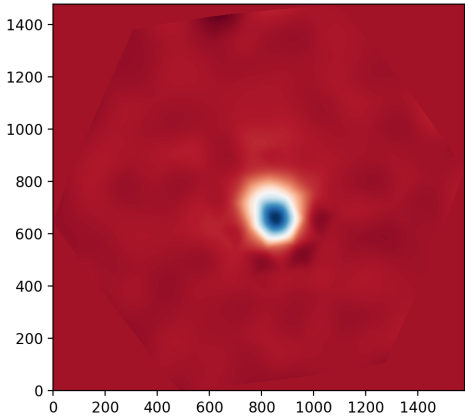
After corrections

Using cross correlation to model the CvD effects

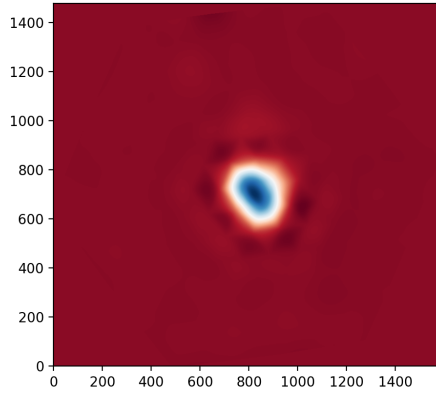
- Using 2022 data
- The variation in centroid with wavelength cannot be reproduced between two stellar observations taken back-to-back due to interpolation effects



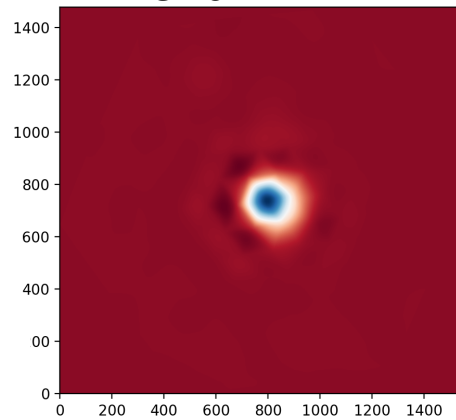
3937



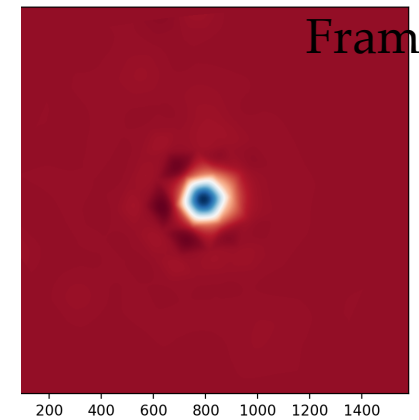
4672



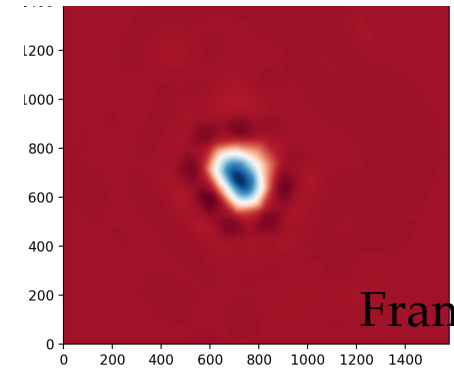
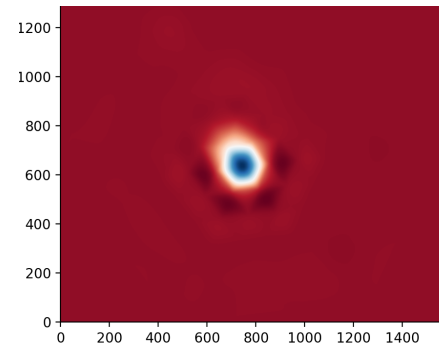
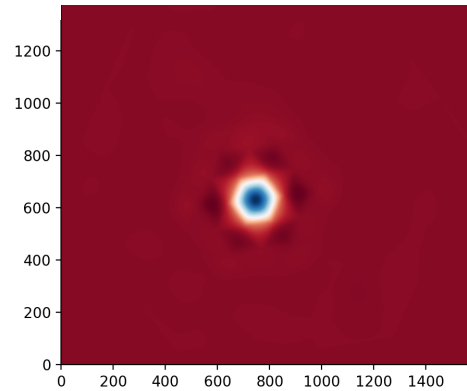
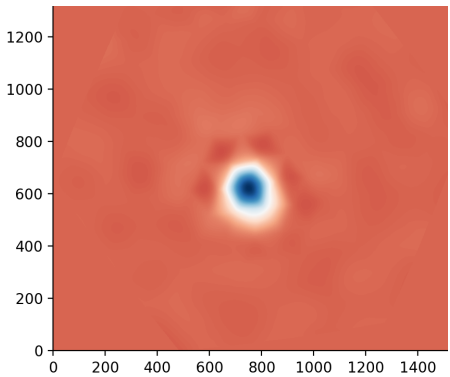
5407



7000



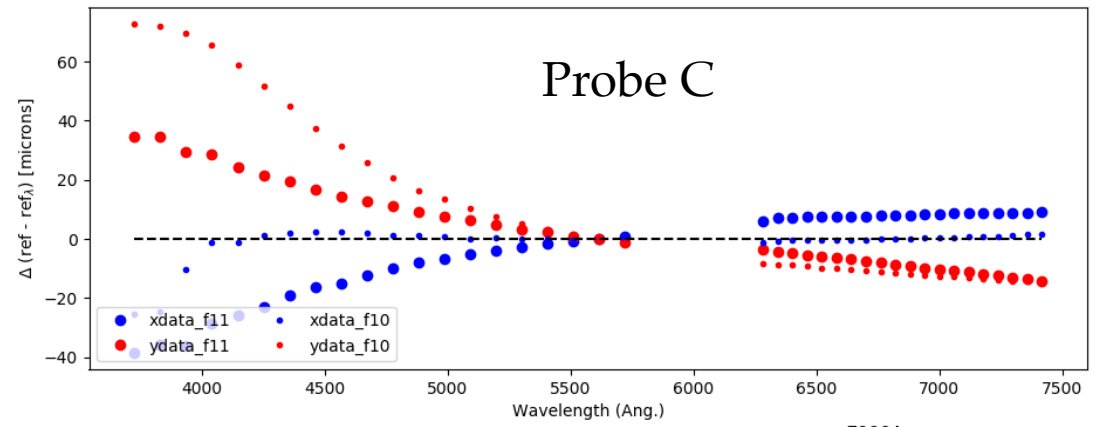
Frame 11



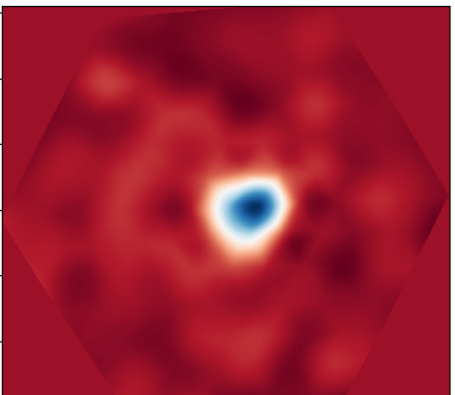
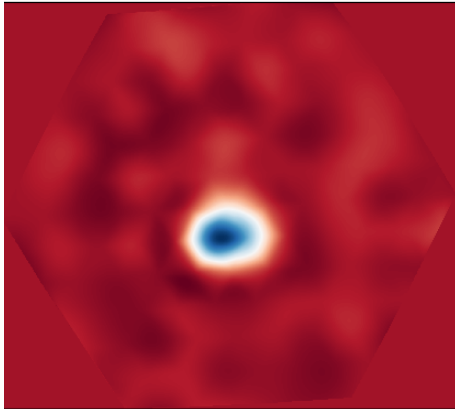
Frame 10

Using cross correlation to model the CvD effects

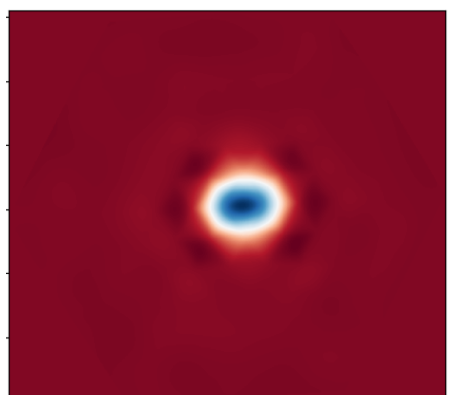
- Using 2022 data



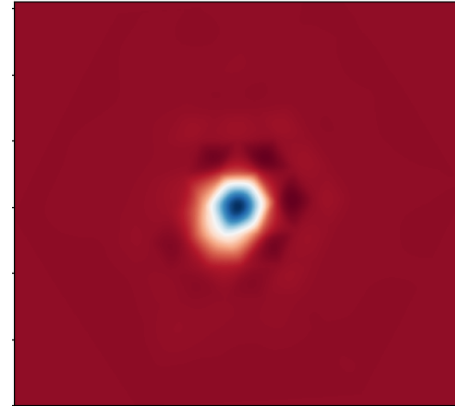
3937A



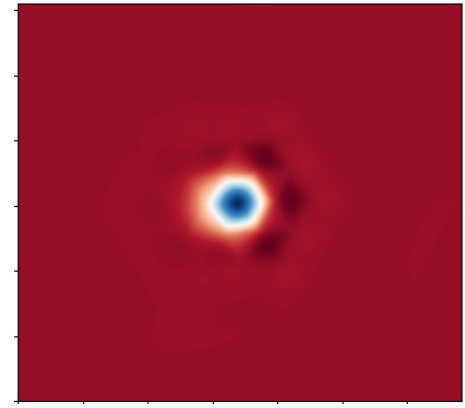
4672A



5407A



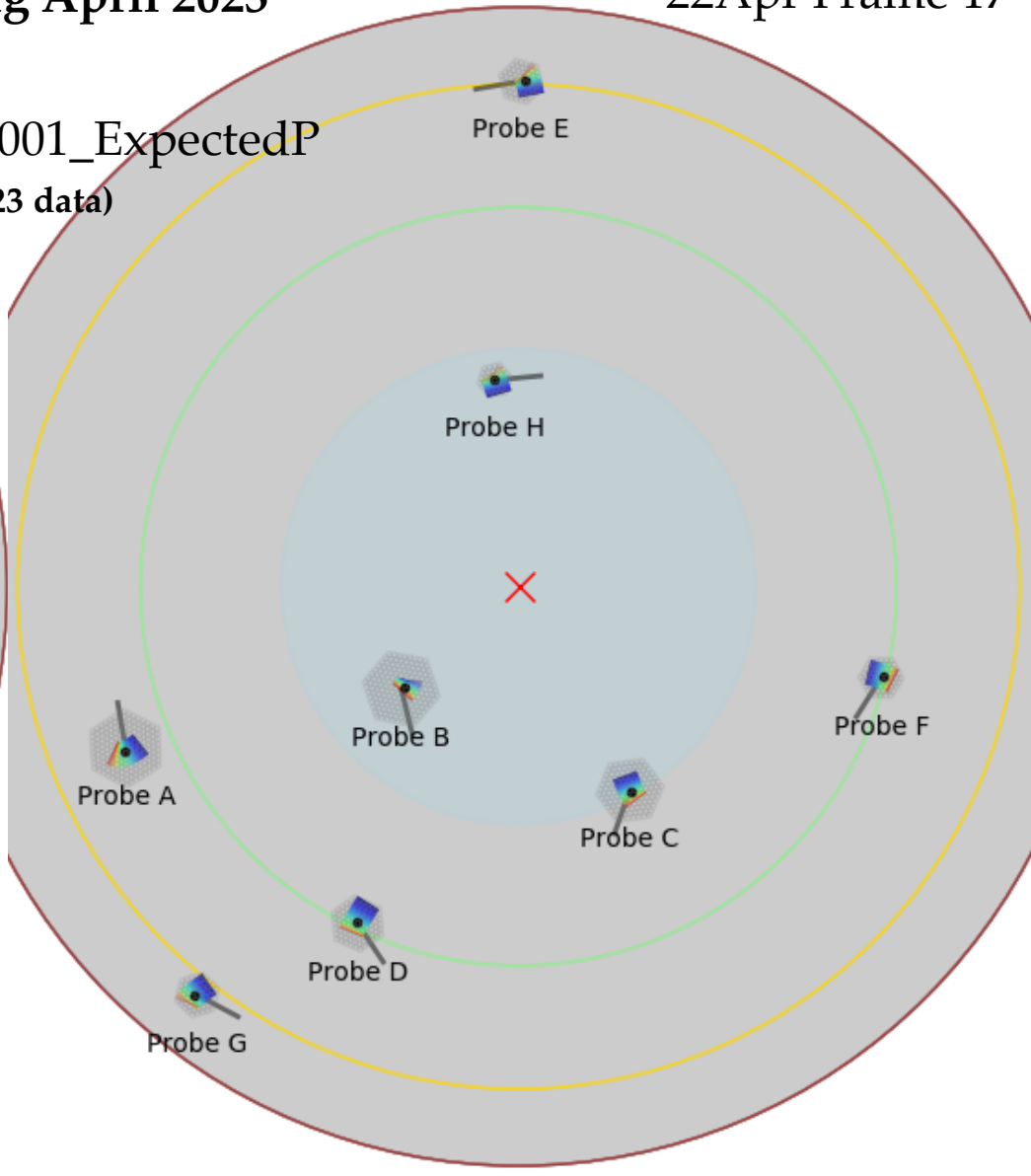
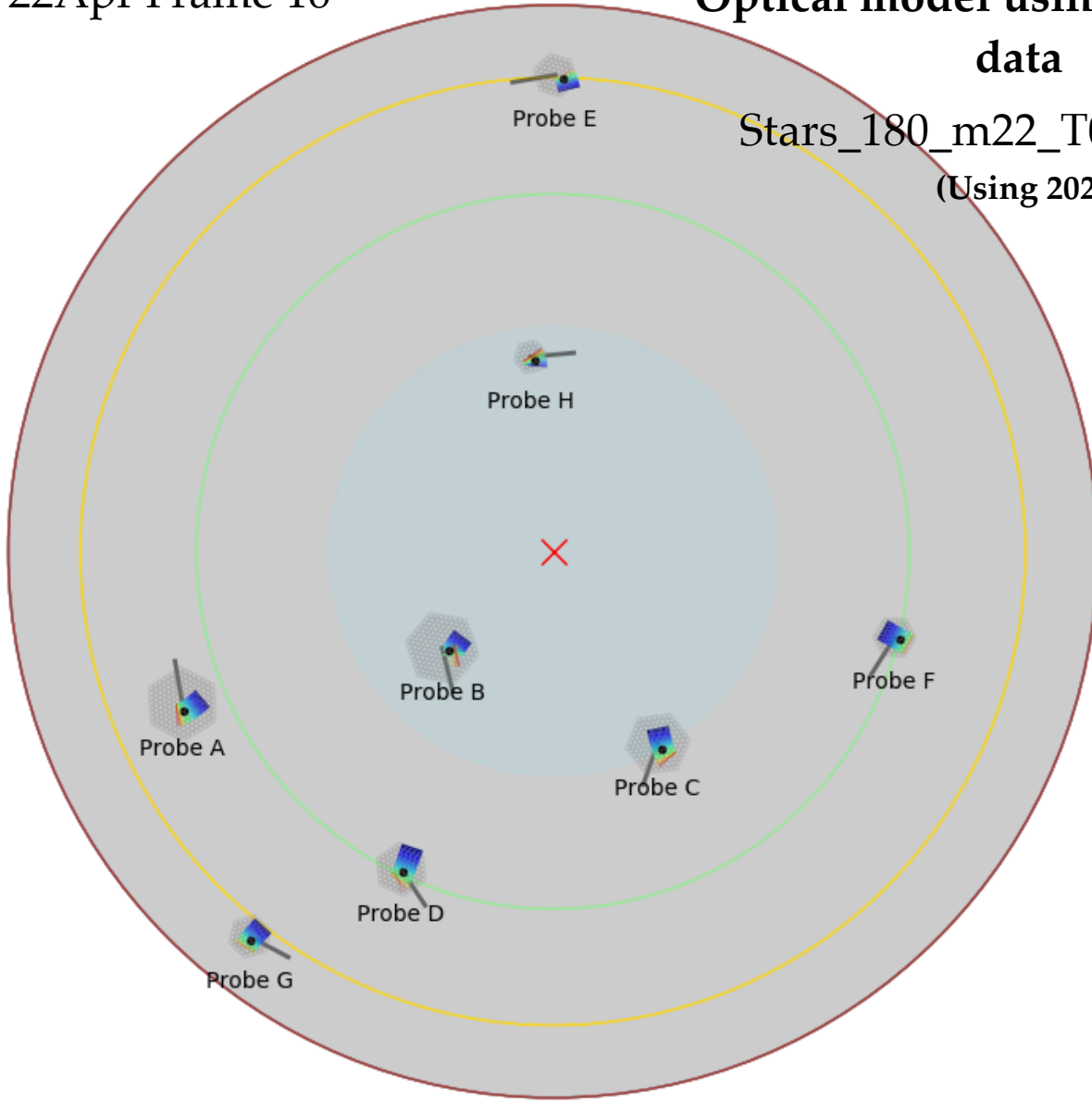
7000A



22Apr Frame 16

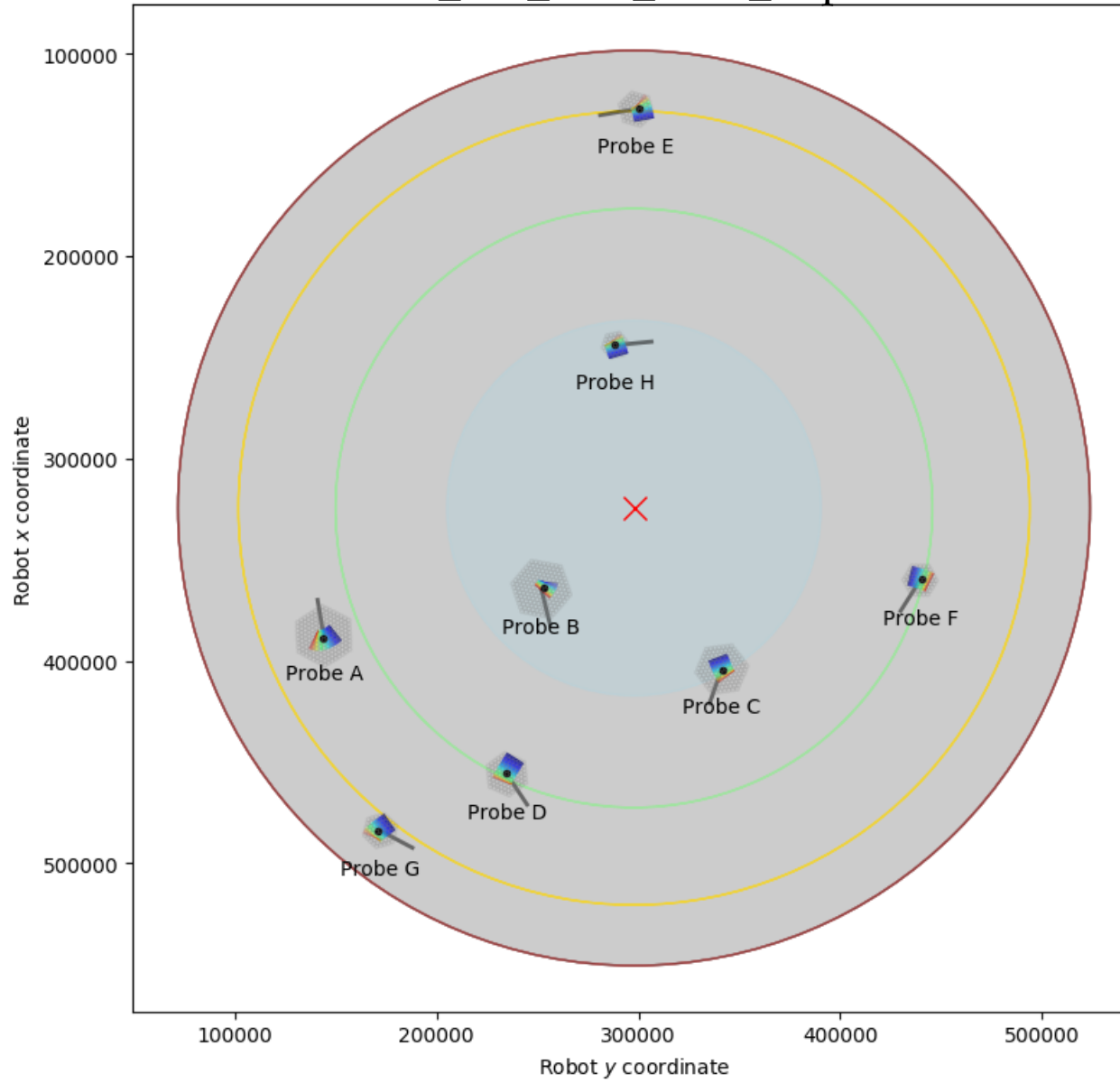
Optical model using April 2023 data

22Apr Frame 17

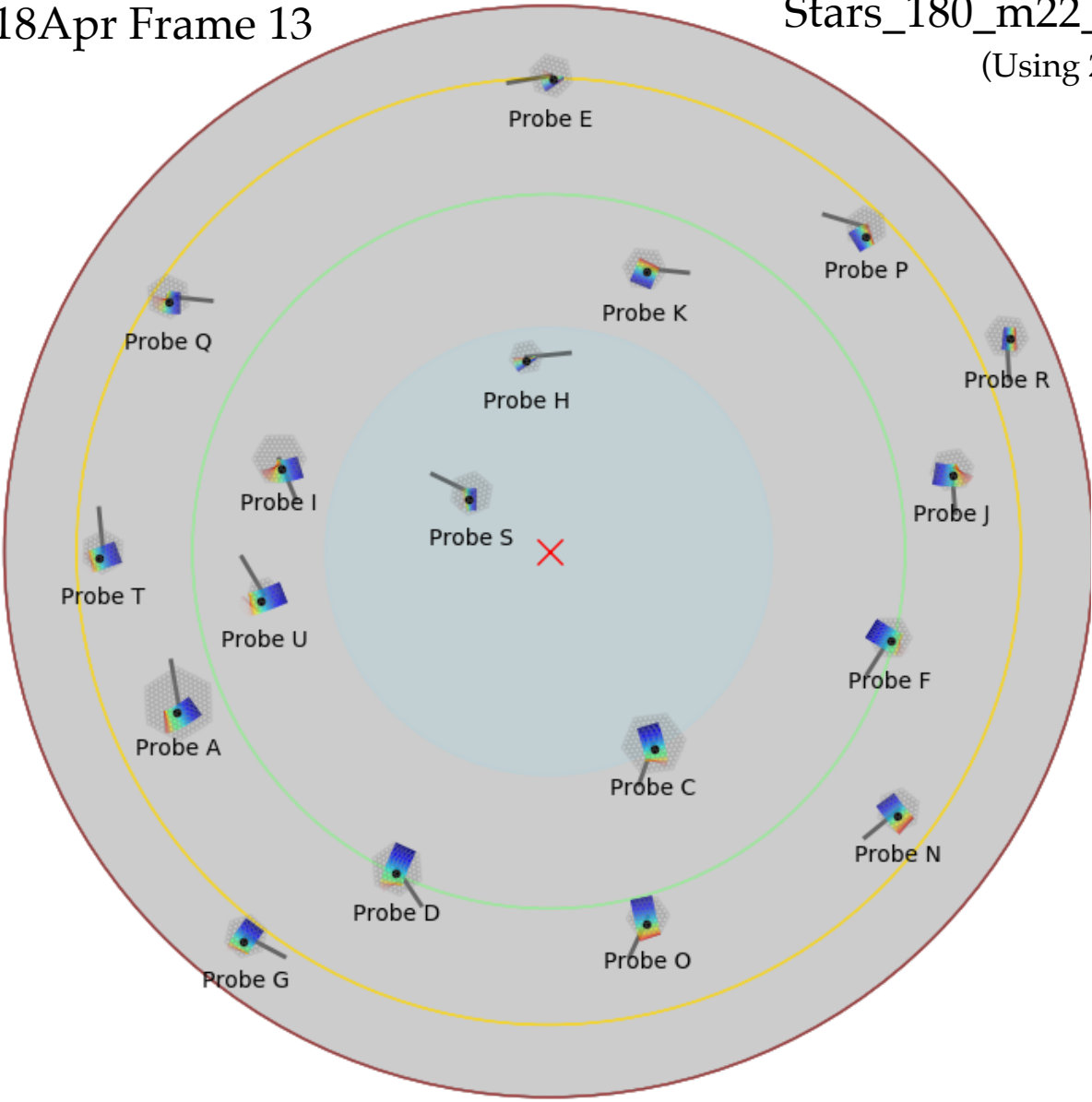


Stars_180_m22_T001_ExpectedP

22Apr Frame 18



18Apr Frame 13



Stars_180_m22_T001_MeasuredP
(Using 2023 data)

18Apr Frame 14

