

Target Selection & Observing update

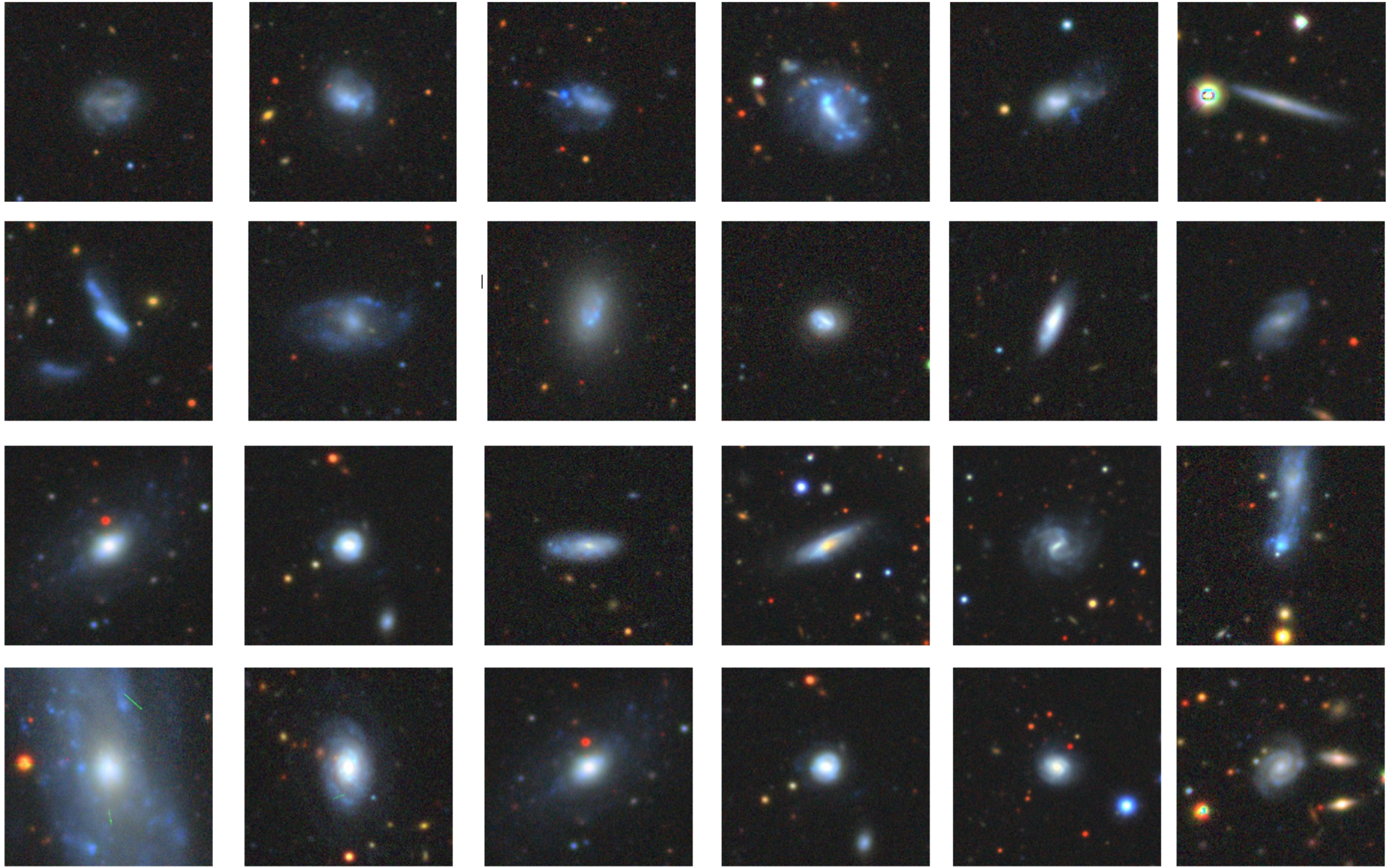
Hector Science Meeting: 10/5/23

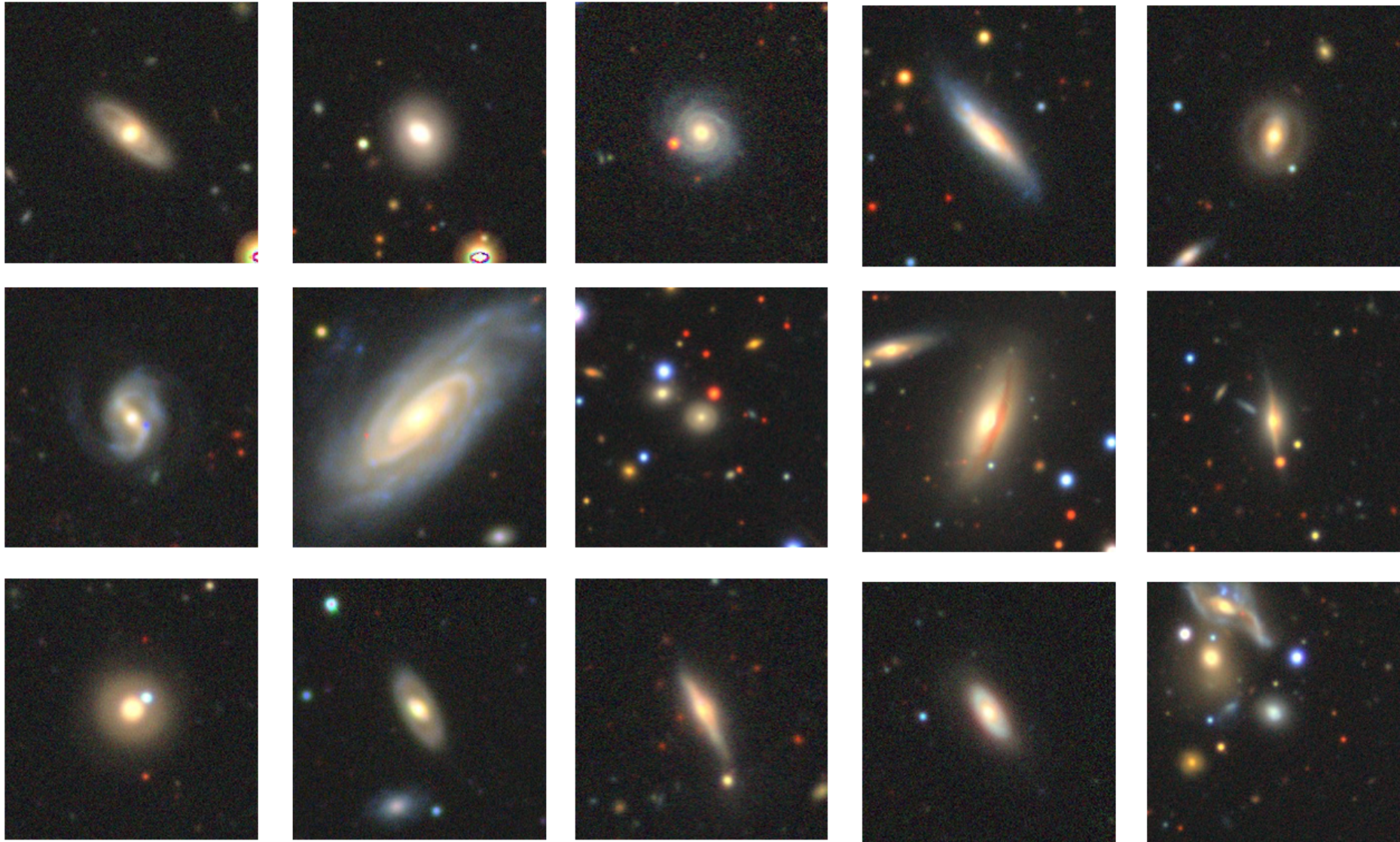
Observing Summary

Hector

- 14 night run in April- thanks to Julia, Susie, Tom W, Tom R, Stefania, Mina and Henry!
- 12 fields completed = 228 galaxies
- 7 fields from G12, 4 from G15, 1 from A3667
- 7 edge-on wind galaxies, 18 MW analogues

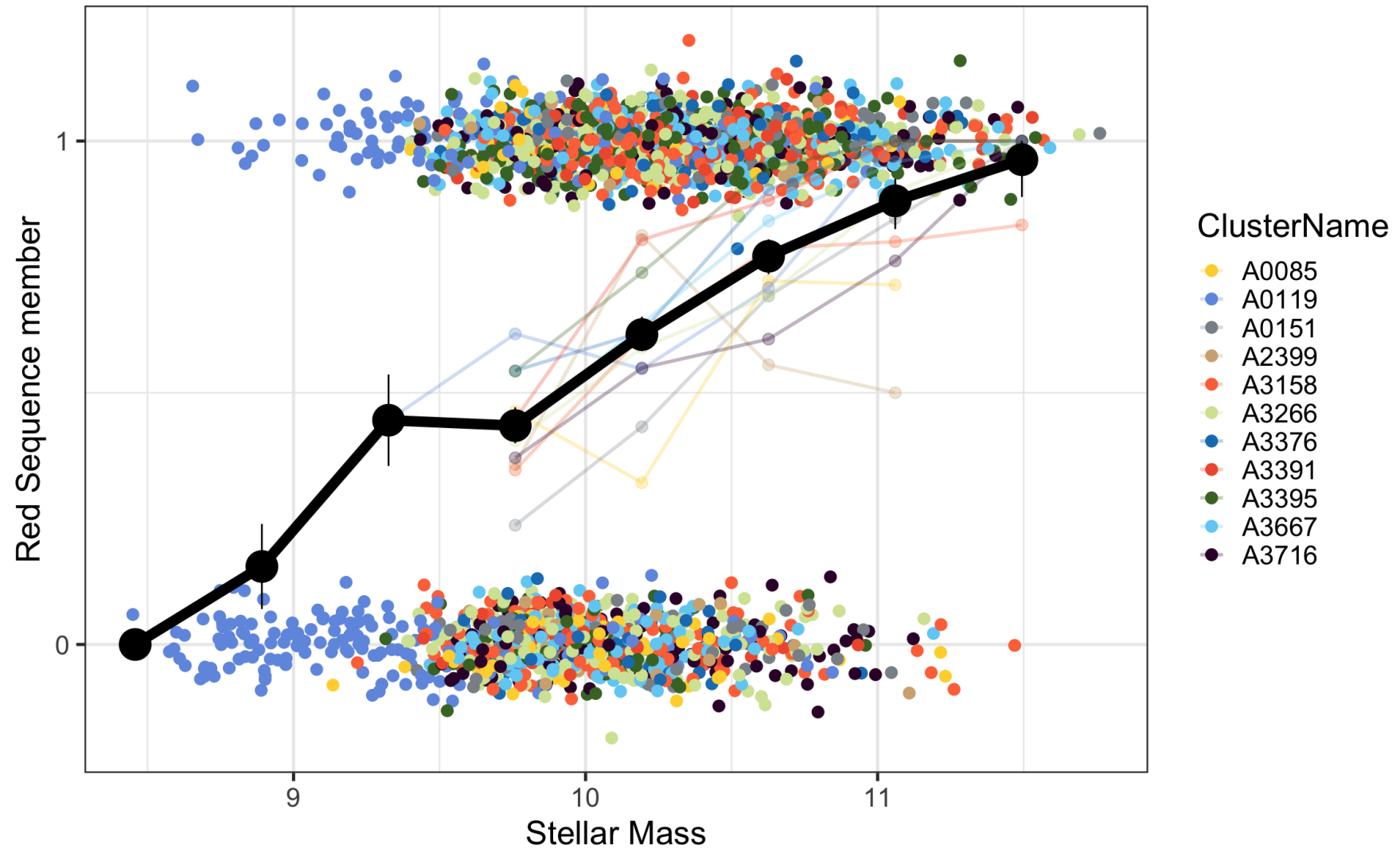
2dF



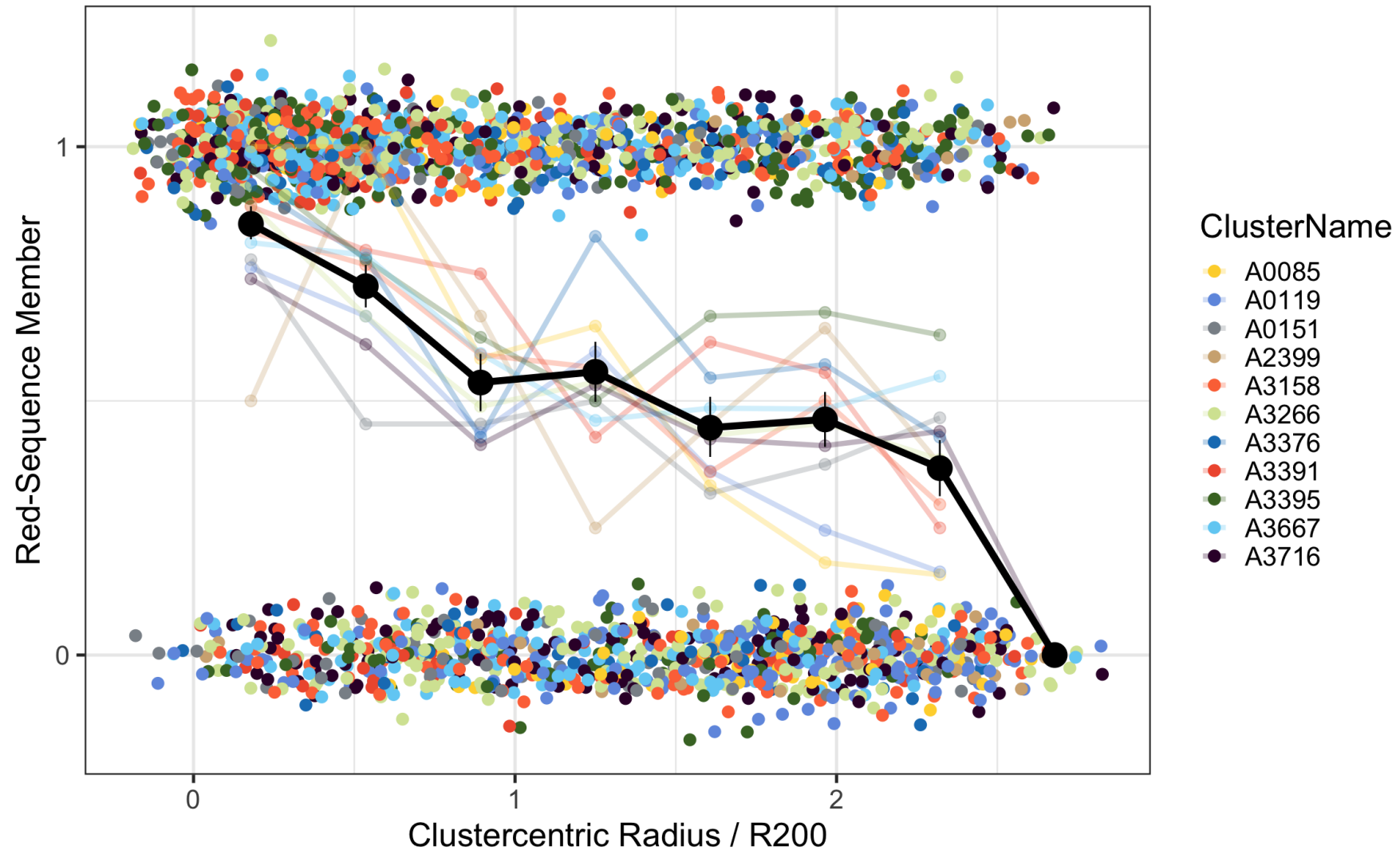


Target Selection

Fraction of red sequence galaxies as a function of stellar mass



Fraction of red-sequence galaxies as a function of clustercentric radius



Summary of the data

Galaxy counts by cluster

Halo Masses are approximate

	NAME	HALO MASS	RED	BLUE	TOTAL	RED FRACTION
	A2399	14.6	30	27	57	52.6%
	A3716	14.7	130	117	247	52.6%
	A3376	14.7	102	51	153	66.7%
	A0151	14.7	64	64	128	50.0%
	A0119	14.8	139	177	316	44.0%
	A3158	15.0	160	104	264	60.6%
	A0085	15.0	52	55	107	48.6%
	A3667	15.1	198	112	310	63.9%
	A3266	15.2	224	158	382	58.6%
	A3391	15.2	117	37	154	76.0%
	A3395	15.4	195	69	264	73.9%
Total	—	—	1411	971	2382	—

Red sequence galaxies by stellar mass

Averaged across all clusters

	MASS BIN		RED	BLUE	RED FRACTION
	LOW	HIGH			
	8.6	9.0	5	48	9.4%
	9.0	9.4	31	56	35.6%
	9.4	9.8	147	212	40.9%
	9.8	10.1	354	364	49.3%
	10.1	10.5	407	191	68.1%
	10.5	10.9	329	83	79.9%
	10.9	11.3	112	16	87.5%
	11.3	11.7	26	1	96.3%
Total	—	—	1411	971	—