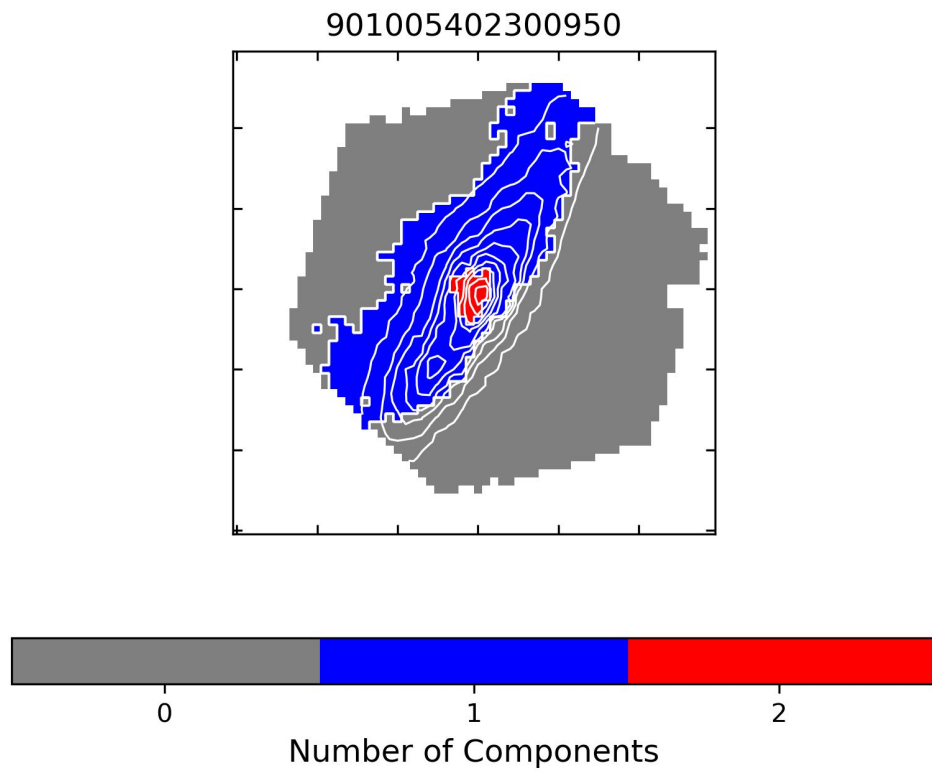
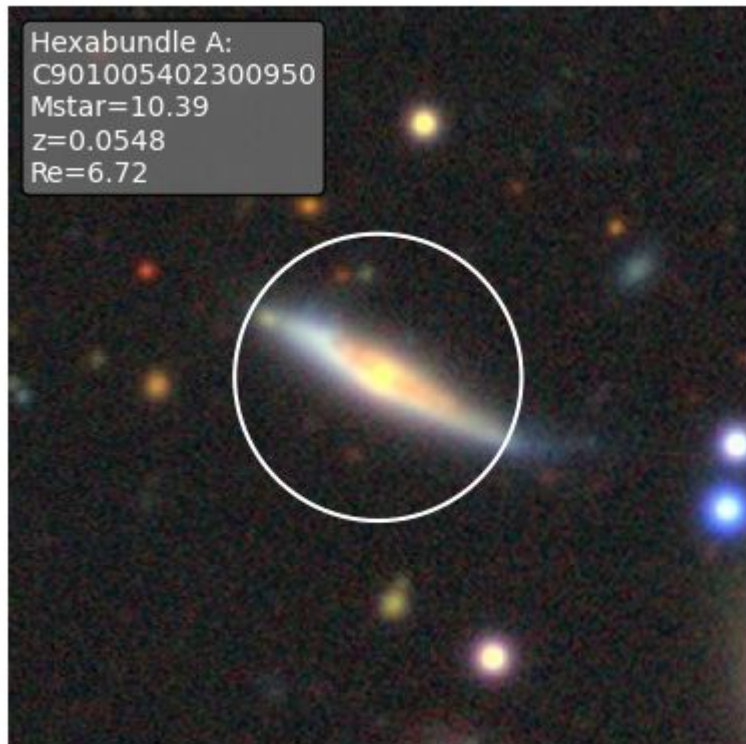
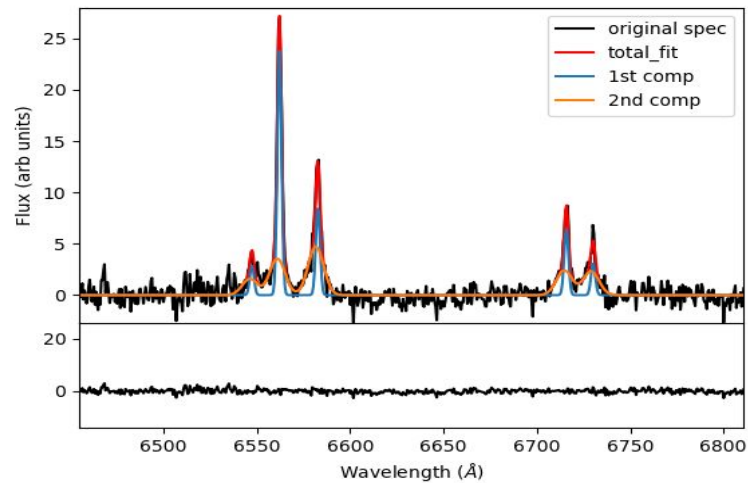
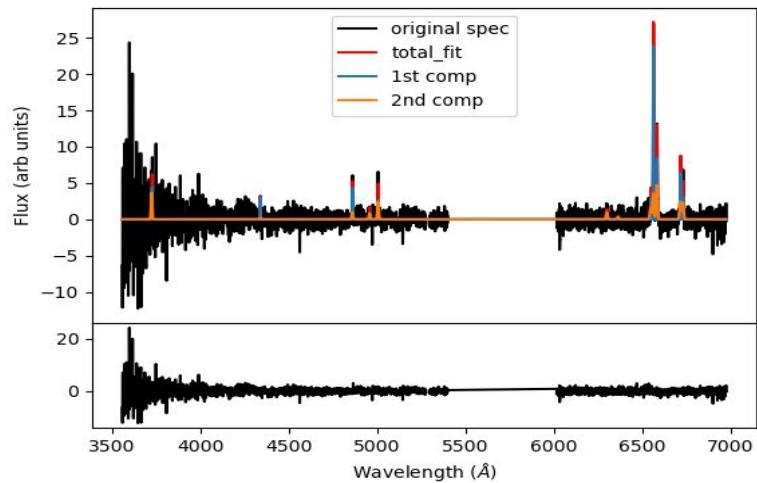
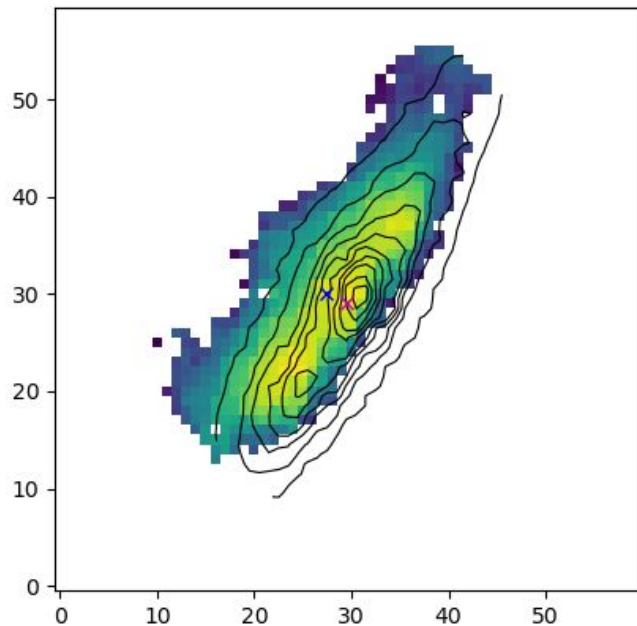


# Multi-component fitting of Hector Galaxies





sig	sig_err	v	v_err	NII/Ha	NII/Ha_err
42.3176	2.38035	-29.6705	1.60773	-0.442998	0.0482273
187.083	10.3232	-80.4015	10.9768	0.124822	0.058341



Colour map - Log10 of total H $\alpha$  flux

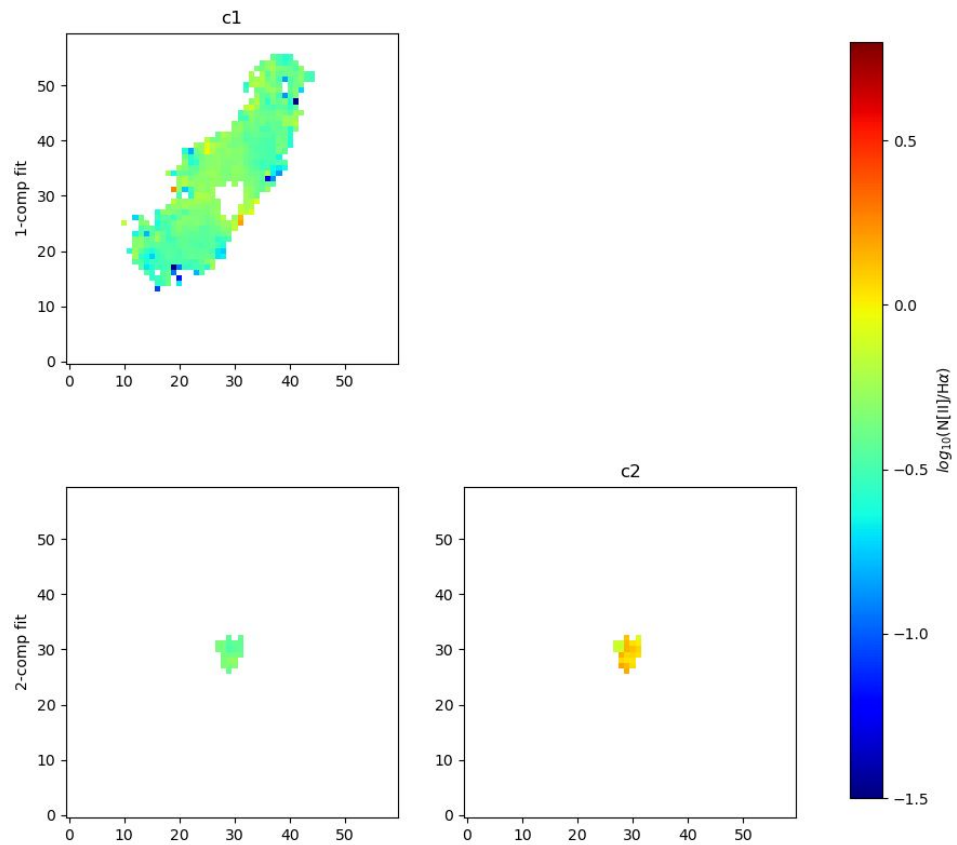
Contours - Median of red-arm spectra with continuum

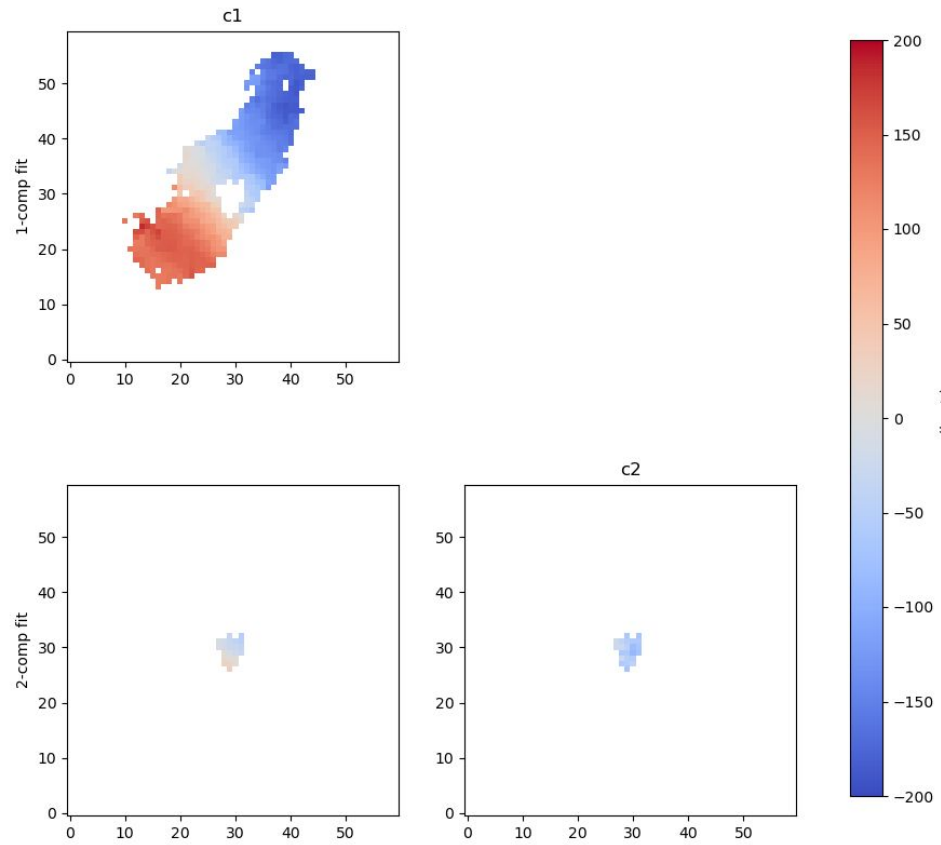
Blue cross - Centroid of H $\alpha$  flux

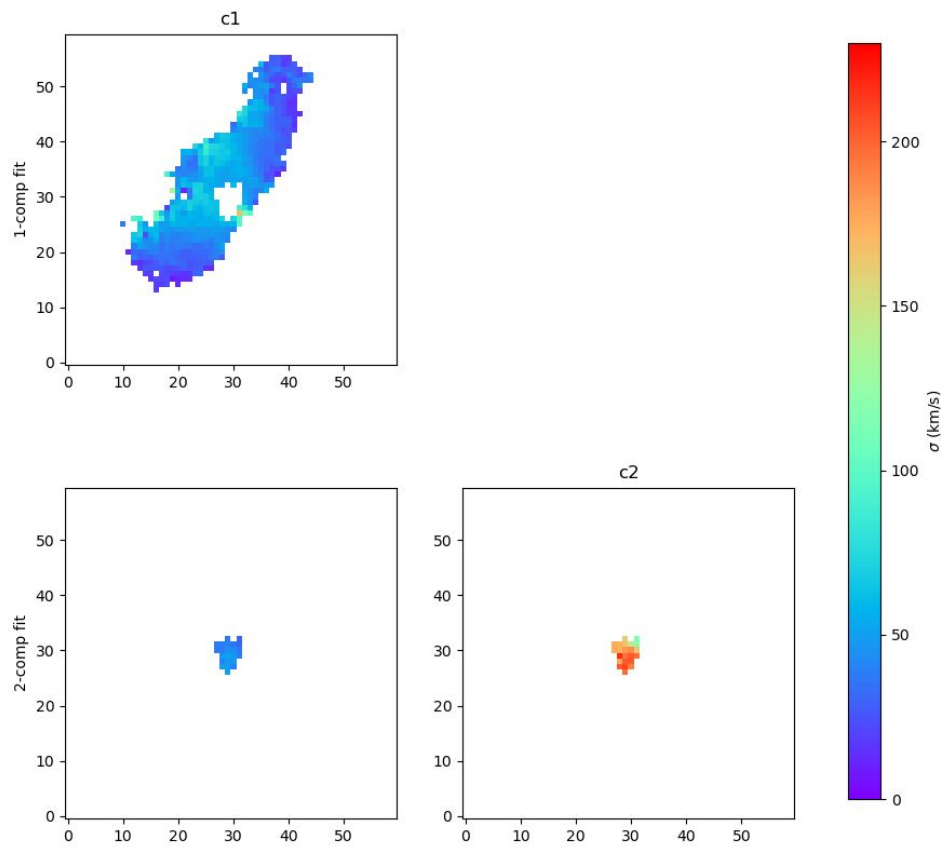
Red cross - Centroid of continuum

Offset 1.125''

SN of both H $\alpha$   
and [NII]  $\geq 3$







SN of all BPT lines  $\geq 3$

